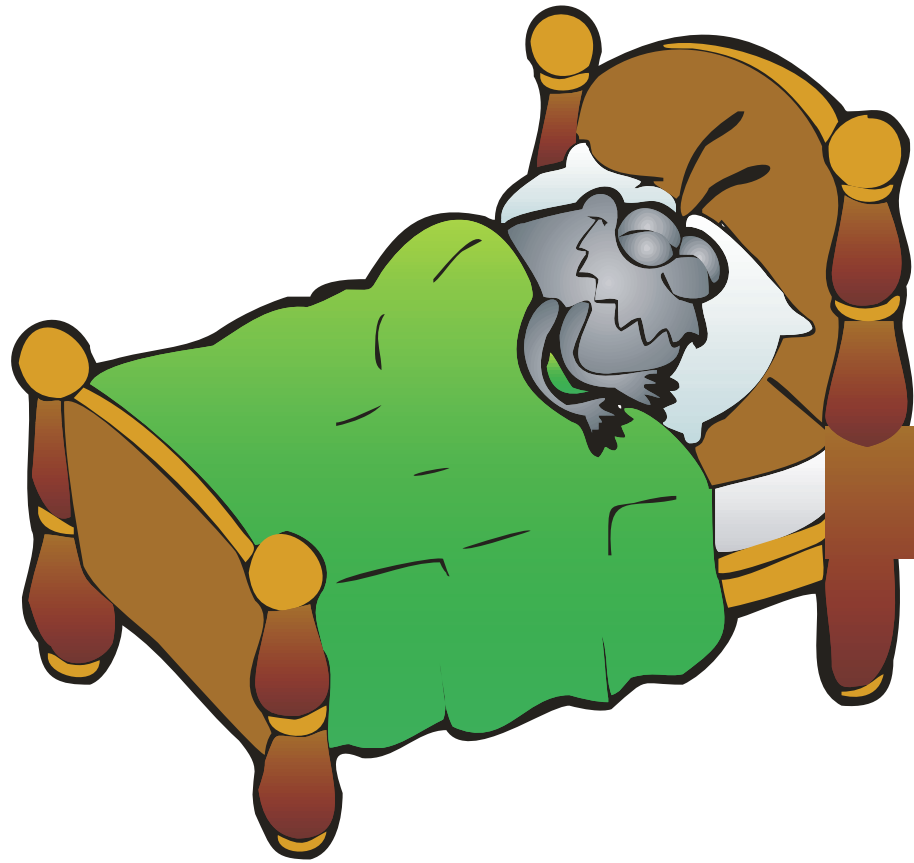




There is strong evidence that this tiny critter causes asthma.

# Triggers of Asthma

- There is strong evidence that this tiny critter causes asthma.



Using these reduces your exposure  
to dust mites in bed.

Dust mite (allergen) covers  
on pillow and mattress

# Reducing Risk

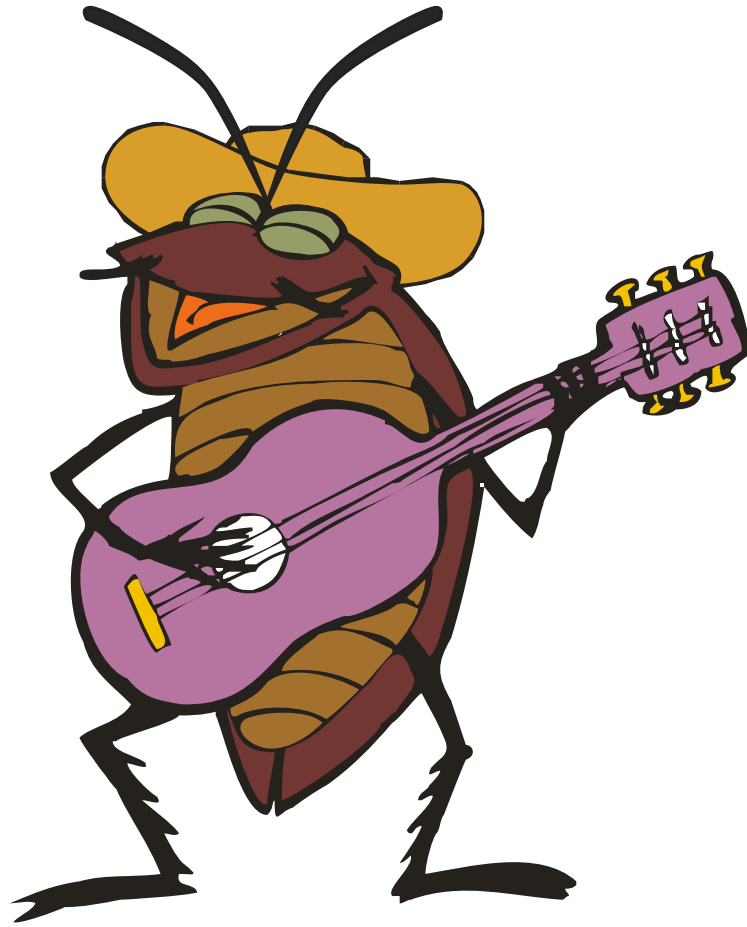
- Using these reduces your exposure to dust mites in bed.



This trigger likes to grow on damp surfaces.

# Triggers of Asthma

- This trigger likes to grow on damp surfaces.

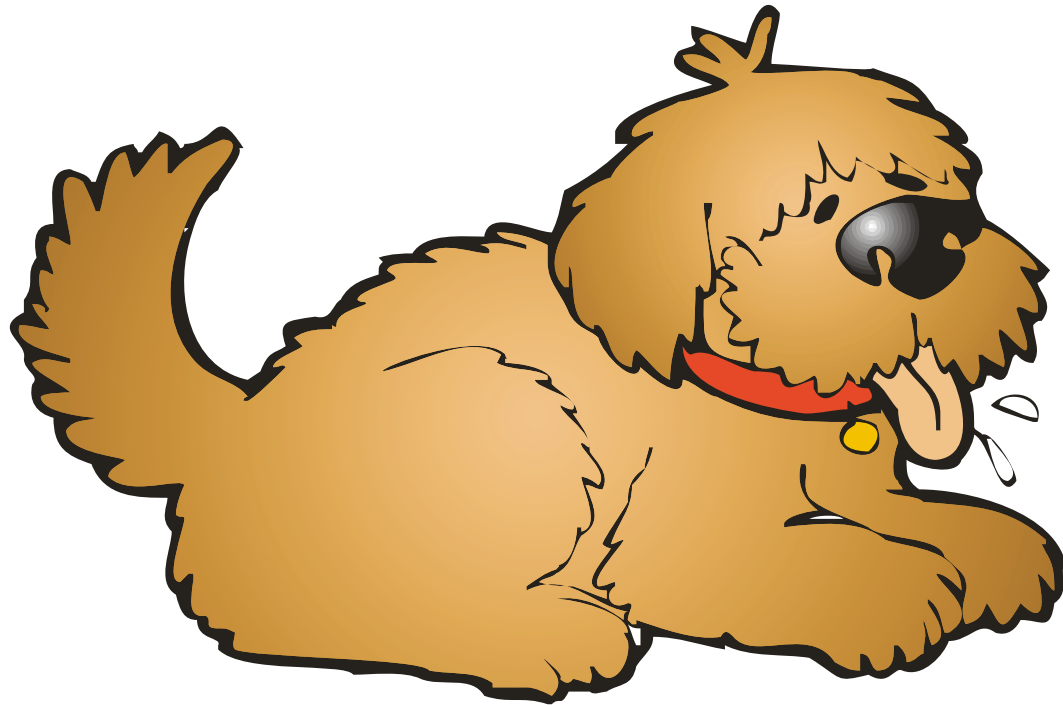


This trigger's body parts  
and droppings make  
asthma worse.

# Triggers of Asthma

- This trigger's body parts and droppings make asthma worse.





This trigger's dander and  
saliva make asthma  
worse.

# Triggers of Asthma

- This trigger's dander and saliva make asthma worse.



Babies exposed to this in the womb are more likely to develop asthma.

# Triggers of Asthma

- Babies exposed to this in the womb are more likely to develop asthma.



This pollutant can make  
allergic responses more  
severe.

# Triggers of Asthma

- This pollutant can make allergic responses more severe.

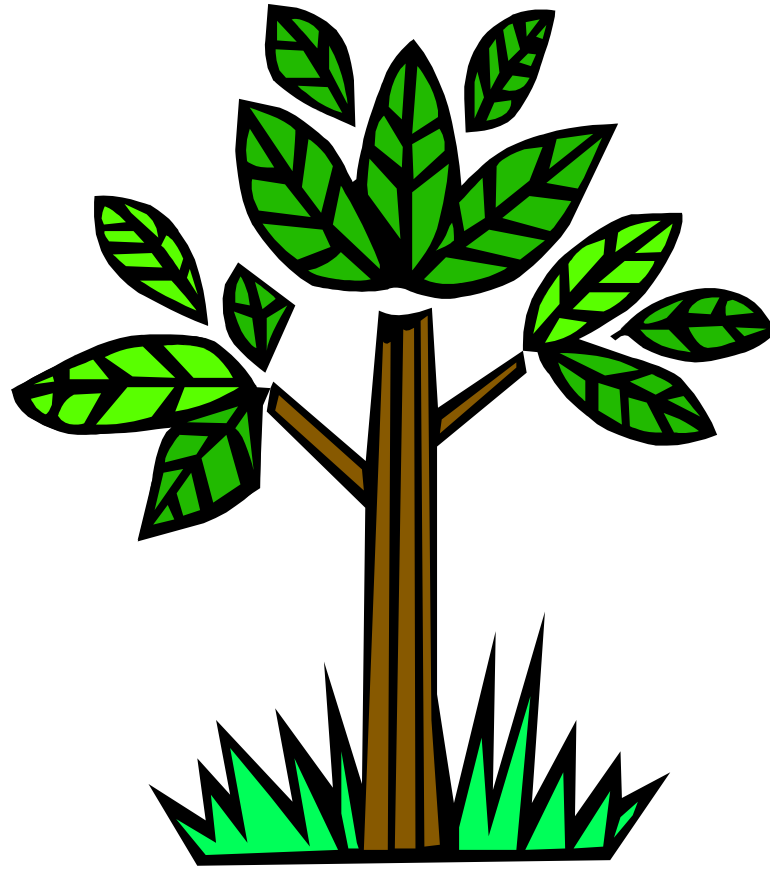


People living near here are  
at greater risk of asthma.

# Triggers of Asthma

- People living near here are at greater risk of asthma.

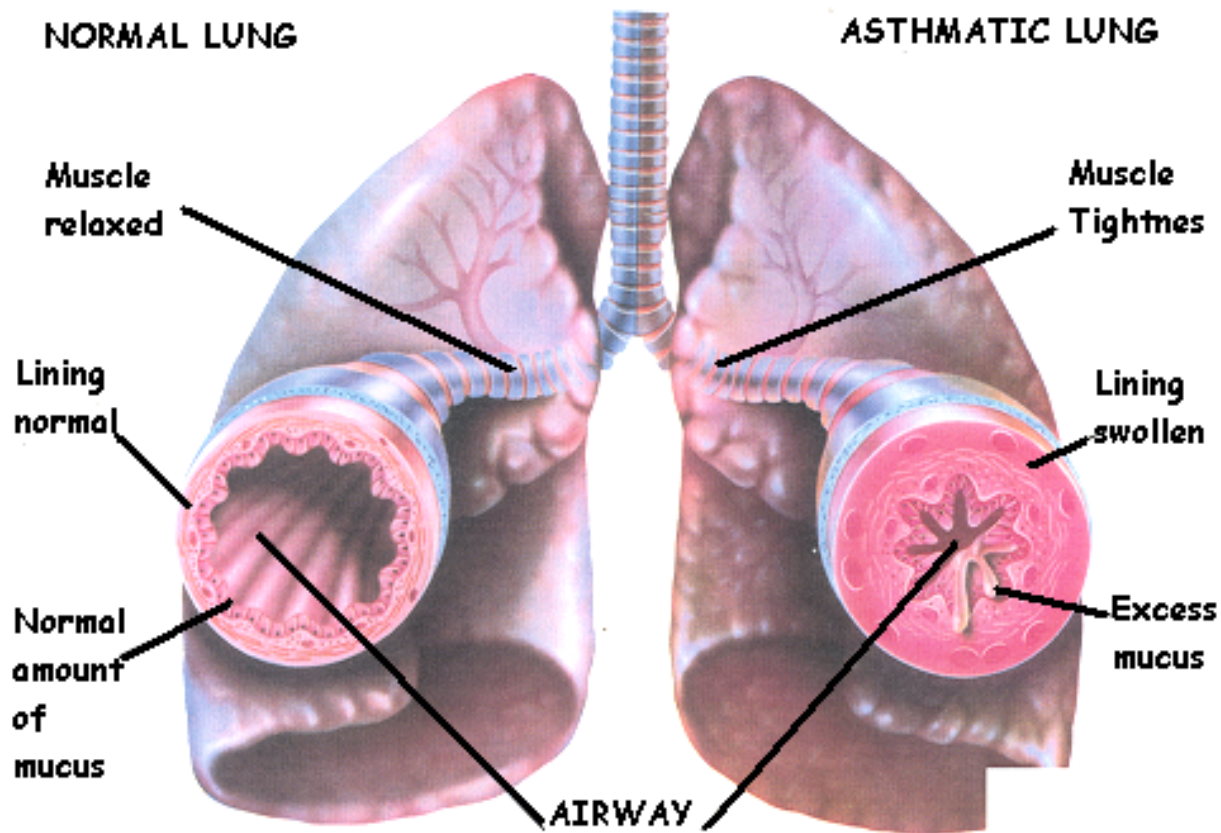




This trigger is found  
outside and the levels  
vary by season.

# Triggers of Asthma

- This trigger is found outside and the levels vary by season.

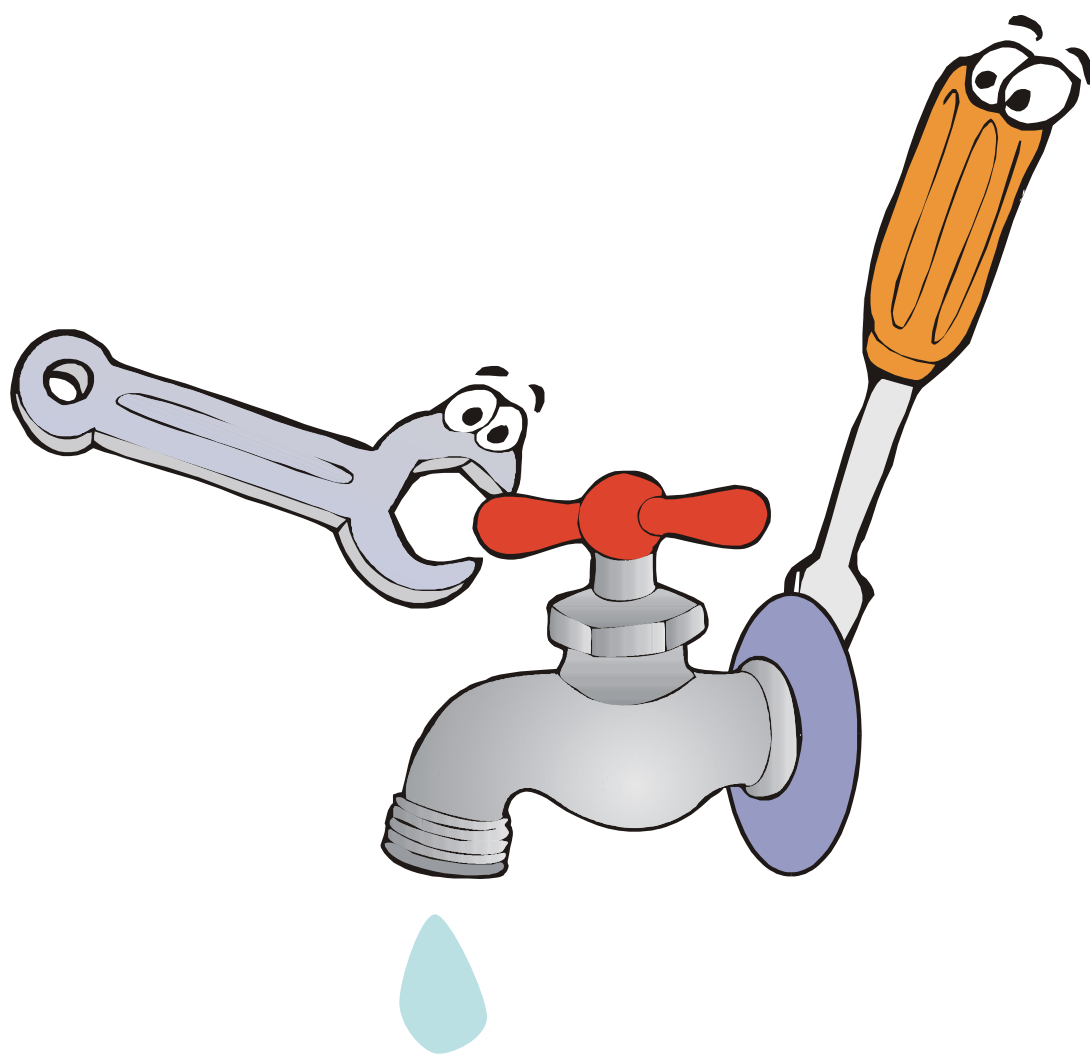


When you have asthma symptoms, this happens.

Airways close up or contract.  
Bronchial tubes constrict.

# Symptoms of Asthma

- When you have asthma symptoms, this happens.



Fixing this helps to control dust mites, cockroaches and mold.

Leaks/moisture

# Reducing Risk

- Fixing this helps to control dust mites, cockroaches and mold.



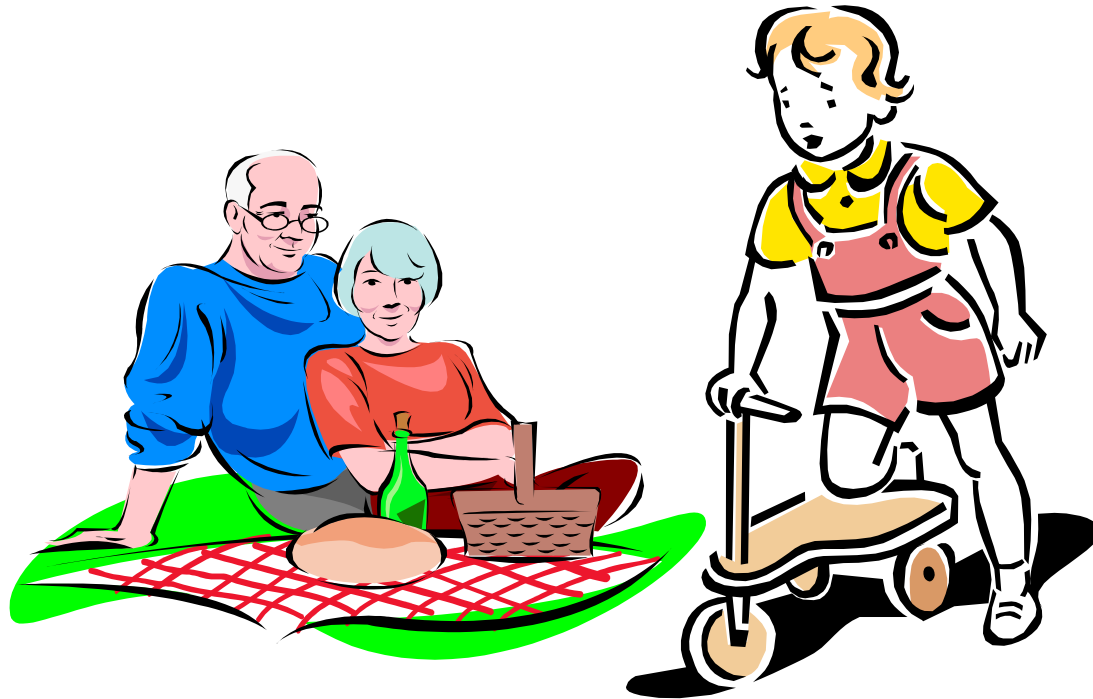
Weekly washing and drying at high temperatures helps kill this trigger.

Dust mites in bedding and stuffed toys

# Reducing Risk

- Weekly washing and drying at high temperatures helps kill this trigger.





Doctors worry about exposure to air pollution in these two groups of individuals, especially if they have asthma.

# Susceptible groups

- Doctors worry about exposure to air pollution in these two groups of individuals, especially if they have asthma.



Asthma occurs more often in these populations.

Inner city/low-income/some minorities

# Susceptible groups

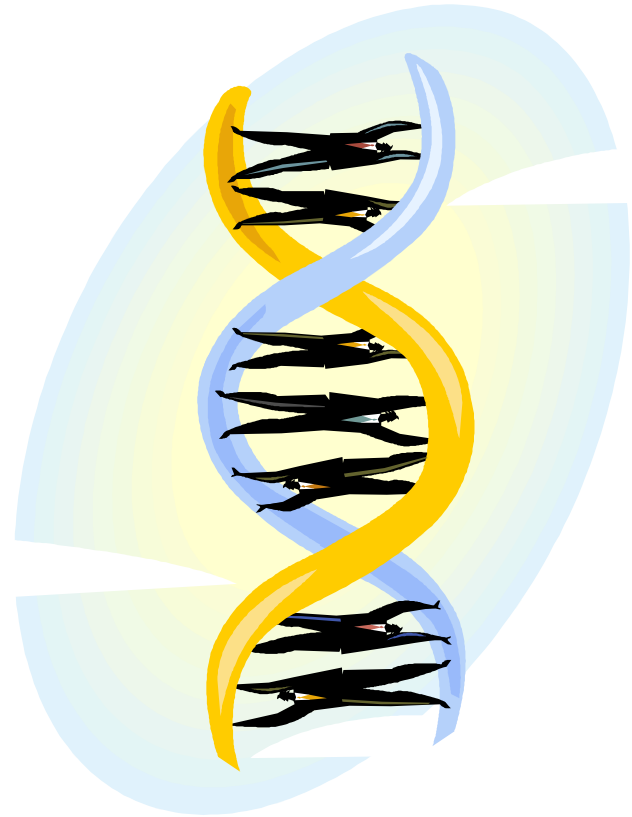
- Asthma occurs more often in these populations.



The prevalence or rate of  
asthma is ..... On the rise or increasing

# Trends

- The prevalence or rate of asthma is .....



You receive these from your parents and they may increase your chance of asthma/allergies.

# Susceptibility

- You receive these from your parents and they may increase your chance of asthma/allergies.